



MEDEN
SCHOOL

Inclusion Support
&
Exam Access Arrangements

WHAT IS INCLUSION SUPPORT

Inclusion Support is the support that is given to students that have a diagnosis of an additional need. Examples of the needs that children may get additional support for are;

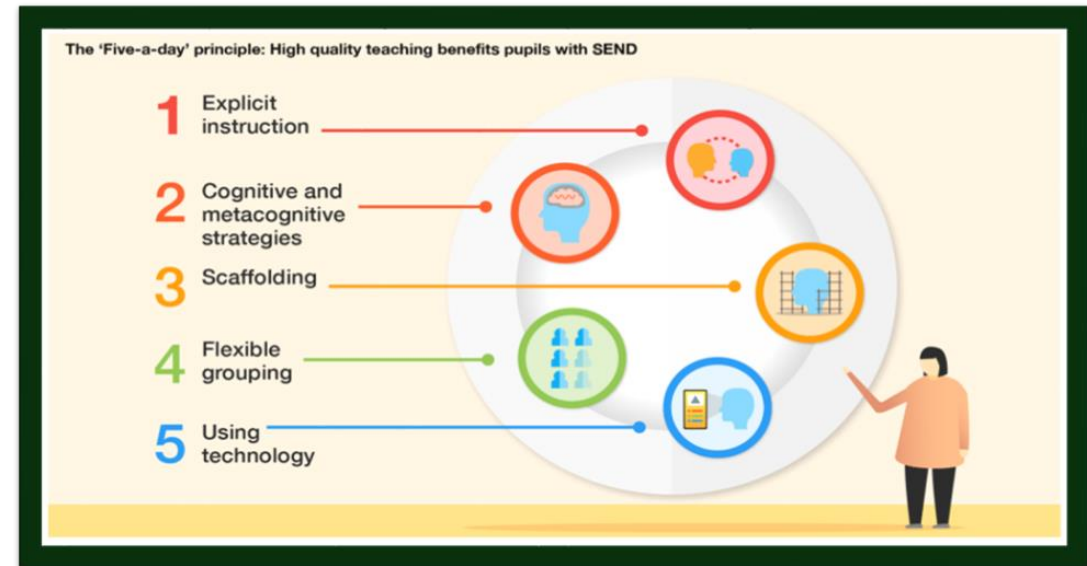
- **A Communication & Interaction Difficulty – Autistic Spectrum Disorder**
- **A Cognition & Learning Difficulty – Learning Delay, including a specific learning difficulty – Dyslexia, Dyscalculia**
- **A Social Emotional or Mental Health Difficulty – ADHD, Anxiety, Depression, A Mental Health Concern.**
- **A Physical Disability or a Sensory need**
- **English as an Additional Language**

INTERVENTIONS

- **Key Worker and Mentor**
- **School Counselling**
- **Mental Health Support team**
- **Teaching Assistant in some lessons providing support**
- **Study support sessions in the Inclusion centre after school on a Wednesday.**
- **SENCO monitoring Achievement levels of all young people with additional needs.**
- **Reasonable adjustments for students**

WHAT DO WE NEED FROM YOU AND YOUR CHILD?

- **100% Attendance**
- **100% Engagement in lessons including interventions.**
- **Complete homework**
- **Speak to us about any concerns or worries.**
- **Trust our decisions are in the best interest of your child.**





Q Search Meden College

[Home](#) [News](#) [Ethos](#) [Pastoral](#) [Curriculum](#) [Enrichment](#) [Achievement](#) [Transition](#) [Communication](#) [Working at Meden](#) [Contact](#)

[Student & Parent Portal](#) [Information](#) [Curriculum](#) [Year Groups](#) [College](#) [Study Support](#) [Extra Curricular](#) [Student Wellbeing](#) [Vacancies](#)

- Remote Learning
- Homework
- The Learning Zone
- Oracy
- Reading
- Y11 Support Hub
- Inclusion Department**
- E-mail Access

WELCOME TO
Meden School

Year 11 Information Evening
Thursday 19th September
6pm - 7pm

ASPIRATION



EXCELLENCE



ACHIEVE

Student & Parent Portal

[Careers](#)
[Calendar](#)
[Exams](#)
[Homework](#)
[Remote](#)

Inclusion

- Inclusion**
- Staff
- Team Members
- Communication and Interaction
- Cognition and Learning
- Sensory and Physical Needs
- Social Emotional and Mental Health
- Links

Welcome to Inclusion

Home > Curriculum > Inclusion

Statutory Information

The documents below are those required by the DfE to be published on the website.

[SEND Policy](#)

[Accessibility Procedure](#)

[Equality Objectives](#)

Related Downloads

[National Sleep Helpline \[PDF\]](#)

September 2024

M	T	W	T	F	WE
					1
2	3	4	5	6	7
9	10	11	12	13	14
16	17	18	19	20	21
23	24	25	26	27	28
30					

[View the calendar in full](#)

Welcome to the Inclusion Team

Welcome Inclusion section of the website. We have included resources and links for websites under the four SEND areas of need.

These sections are to provide information for parents and carers to guide you in supporting your children. These sections will be regularly updated so do check in regularly.

Some of the relevant statutory SEND policies are above. All policies can be found on our

[Policy Pages](#) - click to access this page..

SEND LOCAL OFFER



SEND Local Offer short summary with BSL

[Copy link](#)



EXAM ACCESS ARRANGEMENTS

Usual Way of working, must be evidenced over several years

- Extra Time
- Quiet Room
- Reader
- Can ask someone to read the question for them
- Use of a laptop
- A scribe
- Exam Dispensation



EXAM ACCESS TESTING

If your child is entitled, you will already know

However,

If you are unsure, wait behind to speak to Mrs Hind.

ASPIRATION



EXCELLENCE



ACHIEVE



QUESTIONS OR CONCERNS

Email SEND@medenschool.co.uk

ASPIRATION



EXCELLENCE



ACHIEVE



OTHER SESSIONS

- Maths targeting a grade 4/5 KKI B9
- English targeting a grade 4/5 NWA B7
- Mental health and toughness CWI B2
- Revision strategies AMN B6
- General support OSI B5
- Inclusion support SMO B4
- Next Steps CHI B3

