

What to do if a pupil/student tests **positive** for COVID-19 on a Lateral Flow Device (LFD)

Printable guidance for Schools and Colleges



2. Contact parent / legal guardian

Call their **parent or legal guardian** and arrange for the pupil or student to be collected if needed.

Tell them they should take a **confirmatory PCR test**

Find a **quiet space** to talk with the pupil or student, being mindful of the need for social distancing/PPE

3. Provide reassurance

They may be anxious about their health and impact on their family. This is a chance to reassure them:

- For most people, symptoms will last up to 10 days and be mild.
- **There is support available** with learning from home and support for their parents with work and benefits.

4. Offer support

It is really important that they follow [the national guidance](#) and self isolate for 10 days from the PCR test.

They can **take pride** that they are doing their bit to protect their friends and family and defeat the virus

Take steps to ensure that pupils or students can **access remote learning** at home. Remote learning advice: <https://bit.ly/covidhomelearning>

5. Reminder to share result of PCR test

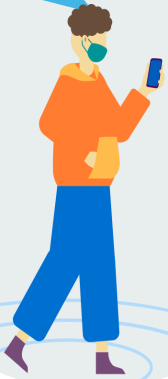
Before they go, remind them and /or their parent/carer to let school/college know about the **result of the PCR test** (they will be told via text/email)

1. Record details

- Ensure any details of the pupil / student are recorded **securely** to protect their privacy.
- They will need to do a **confirmatory PCR test**.



A pupil/student in my school / college has tested positive on an LFD test, what do I do now?



Signpost to other advice:

- Support if you're off work while self-isolating: <https://bit.ly/isolatesupport>
- If you're worried about your health, visit <https://www.nhs.uk/> or call 111.
- Remote learning advice: <https://bit.ly/covidhomelearning>
- Printable **action list** for schools/colleges for children with symptoms



IMPORTANT: If, at any point, a student, pupil or staff member begins displaying symptoms they must [follow government guidelines](#), [order a PCR test](#) and self-isolate.



A new approach to close contacts – ‘serial contact testing’*

Printable guidance for Schools and Colleges

A new approach known as ‘**serial contact testing**’ has been developed to help find more asymptomatic cases. This will allow those (pupils/students and staff) who are in close contact with someone who has tested positive for COVID-19 to return to school/college. If they agree to be tested for 7 days* following their last contact with a positive case.

IMPORTANT: If, at any point, a student/pupil or staff member begins displaying symptoms they must [follow government guidelines](#), [order a PCR test](#) and self-isolate.

A close contact of my child **at school / college** tested positive, what are my options?

I want to take the daily test...

You'll need to take a lateral flow test at the start of each day for **7 days***

You can choose to opt out from daily testing at any time and self-isolate.

I'd rather stay at home...

If you do not wish to be tested daily or are unable to be tested for any reason, you must self-isolate in accordance with [national guidance](#) until 10 days after the person they are a contact of tested positive

If your lateral flow test is negative

Continue with your normal activities until your next test is due.

If your lateral flow test is positive

Follow [the national guidance](#), and **take a confirmatory PCR test**, self isolate until the result of your PCR test is available.

If your PCR test is positive

Complete 10 days self isolation. All other identified close contacts and household members of this positive case will now also follow the [national guidance](#).

If your PCR test is negative

Continue with your normal activities until your next LFD test is due.



Any new positive cases during serial contact testing will reset the clock for the serial contact testing (daily testing) to the start of 7 days.

*If the participant cannot take a test (e.g. on the weekend), they should self-isolate for that day, and resume serial contact testing on their return to school / college. If they return after the 7 days are finished, then they should take one test to complete the self-isolation period, and if it is negative they can return to school/college and their testing period is complete (even if they have not taken 7 tests in total).

